

# INDUSTRIAL FLOOR TAPE

VS

# INDUSTRIAL FLOOR PAINT



THE AVERAGE FACTORY IN THE U.S. IS **600,000** SQ FT

MANY OF THEM CONTAIN BETWEEN **5,000** TO **12,000 FEET**

OF SAFETY & ORGANIZATIONAL LINES

(most of them painted.)

**BUT**

MORE COMPANIES THAN EVER ARE CHOOSING **FLOOR TAPE** OVER PAINT ... AND FOR GOOD REASONS.

## INSTALLATION



**FLOOR TAPE** requires no extra install equipment.



### FLOOR PAINTING

can require a range of additional tools and products, from rollers to industrial paint sprayers.

## WAIT TIME

*what's the holdup?*

**FLOOR TAPE**

**FLOOR PAINT**

**DRY TIME**

**IMMEDIATE**

**3-8 HRS**

**CURE TIME**

**NONE**

**72+ HRS**

Waiting for paint to dry can cause significant downtime and can sometimes shut down entire factory floors for days, often times resulting in large monetary losses and delayed workflow.

Industrial floor tapes bond **immediately** after install, without having to wait for paint to dry or having to clear the air of toxic, dangerous fumes.

## DURABILITY

**FLOOR TAPE**

**FLOOR PAINT**

Enhanced protection against:

- + forklifts
- + pallet jacks
- + trucks
- + foot traffic
- + chemicals

Extremely easy to clean

Maintains appearance and durability over long periods

Fades and discolors quickly

Can be easily worn down by heavy foot traffic or ind'l equipment

Chips and cracking will appear over time, requiring repainting

**STOP PAINTING YOUR FLOORS!**

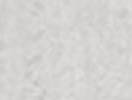
USING INDUSTRIAL FLOOR TAPES



**FREES TIME**



**SAVES MONEY**



**ELIMINATES HEADACHES**

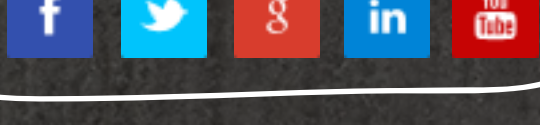
**SAFETYTAC**

#1 Rated Industrial Floor Tape

SafetyTac is the leading brand of industrial floor marking tapes for good reason- It's strong enough to hold up to forklift traffic as well as outlast paint and all other floor tapes on the market.

CALL **1-866-777-1360** FOR A **FREE SAMPLE**

LEARN MORE ABOUT US  
find us on social media!



**CREATIVE**  
safety supply

1-866-777-1360  
www.creativesafetytapsupply.com